
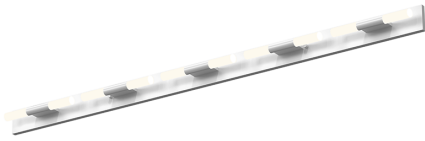


SONNEMAN
A WAY OF LIGHT

crystal rods™ 10-Light LED Bath Bar

3805.03W

 3805.03W



DIMENSIONS

| | |
|-------------------|-------|
| Height | 2.5" |
| Width | 47" |
| Extension | 2.25" |
| Minimum Extension | 2.25" |
| Maximum Extension | 2.25" |

ELECTRICAL SPECS

| | |
|-----------------------|------------------|
| Bulb Type | Integral LED |
| Bulb Quantity | 10 |
| Bulb Included? | Yes |
| Wattage | 27 |
| Initial Lumens | 2500 |
| Input Voltage | 120-277VAC |
| CCT | 3000K |
| CRI | 90 |
| Power Supply Type | Driver |
| Power Supply Quantity | 1 |
| Power Supply Location | Remote |
| Dimming Type | TRIAC/ELV/0-10V* |

SHIPPING

SHADE 1

| | |
|----------|--------------|
| Quantity | 10 |
| Color | Etched |
| Material | Etched Glass |
| Height | 2.75" |

AVAILABLE FINISHES

| |
|-----------------------|
| Polished Chrome (.01) |
| Satin White (.03) |

GENERAL LISTINGS

| |
|---------------|
| cETL |
| cUL |
| ADA |
| Damp Location |

PROJECT

QUANTITY

NOTES