

**STEP 4 - Wire Connections**

**A.** Use standard wire connectors to make all wire connections. Twist connectors until wires are tightly joined together. Wrap each connection with approved electrical tape and carefully stuff all the connected wires into the Outlet Box.

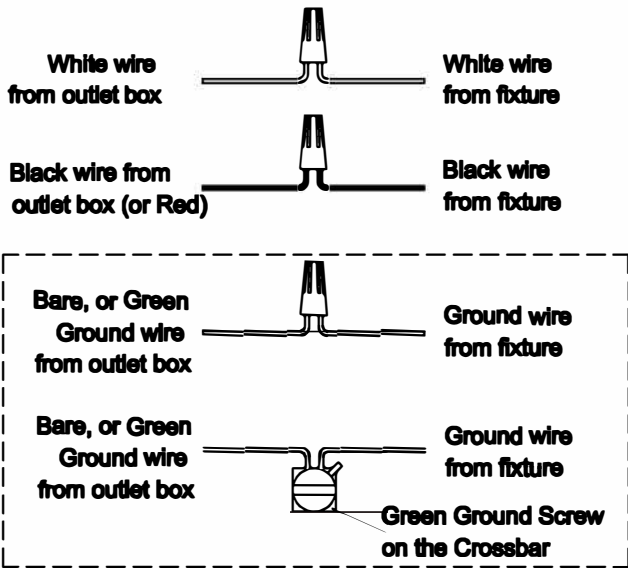


Figure 4

**STEP 6 - Install bulb.**

**A.** Install bulbs into sockets and screw snug into place.

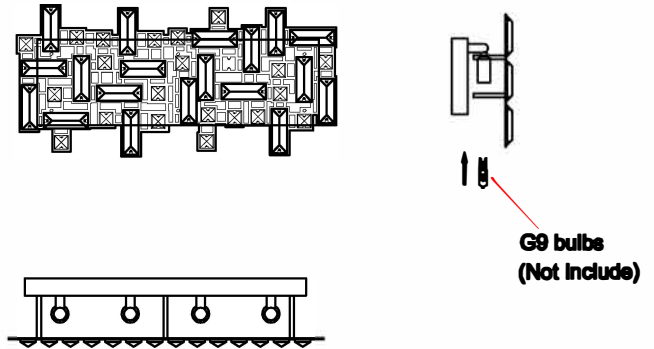


Figure 6

**STEP 5 - Install Backplate to Ceiling**

**A.** Carefully tuck all wires into the outlet box and position the backplate of the Fixture Body (A) over the outlet box. Align the holes in the backplate with the Mounting Screws (DD). Secure Decorative Caps (AA) and hand tighten until snug.

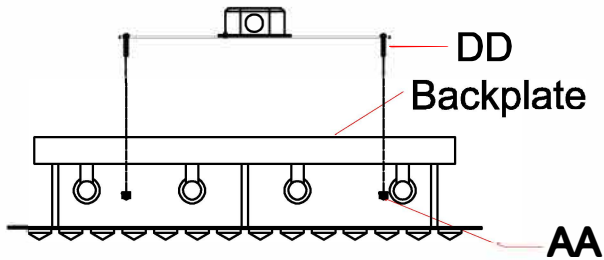


Figure 5