

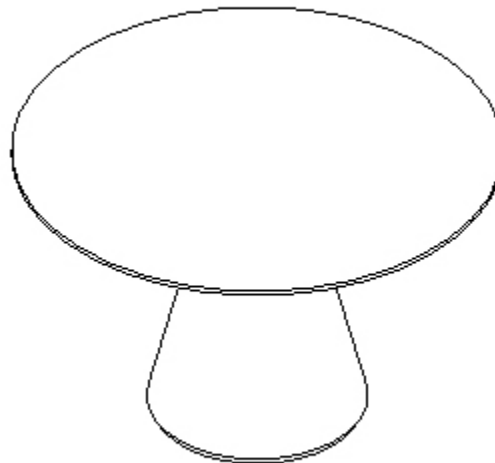
MOE'S

home collection

ASSEMBLY INSTRUCTIONS.

OTAGO DINING TABLE 54in ROUND
WHITE

KC-1029-18



THANK YOU FOR YOUR PURCHASE!

PARTS AND HARDWARE.



Ø1370*135mm

a x 1



Ø540*620mm

b x 1



M10*640mm

c x 2



Ø10*30mm

d x 2



M10

e x 2



Ø12*Ø25*1.0mm

f x 2



g x 1



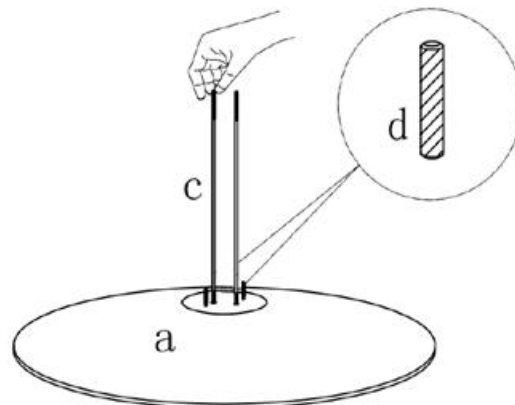
h x 4

NOTES.

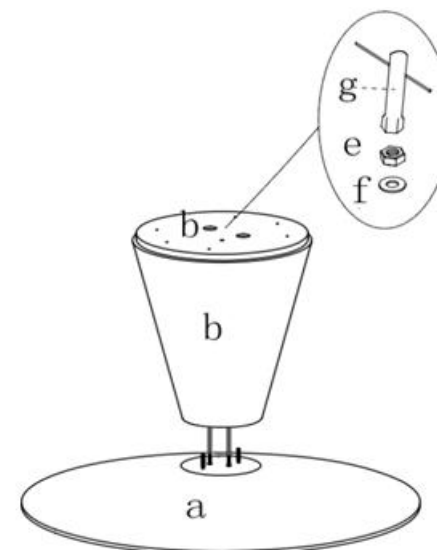
Thank you for purchasing this quality product! Be sure to check all packing material carefully for small part that may have come loose inside the carton during shipping

CAUTION: The item is heavy, assembly should be performed by two people.

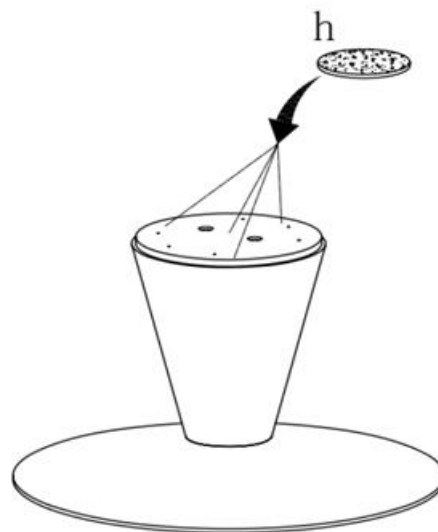
STEP 1.



STEP 2.



STEP 3.



STEP 4.

