

MAGNETA Vanity

120v : **3-590-xxx**

277v : **37-590-xxx**

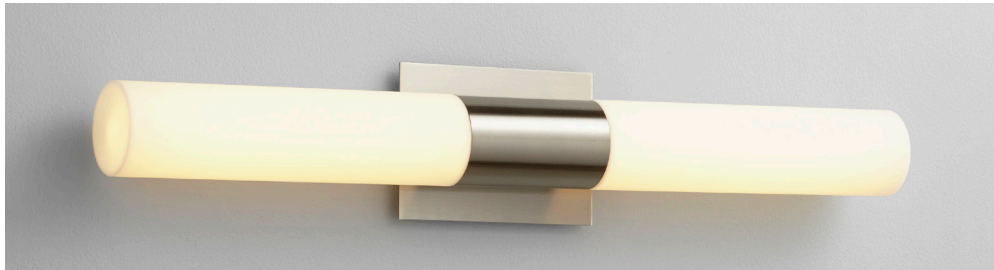
oxygen

FIXTURE TYPE _____

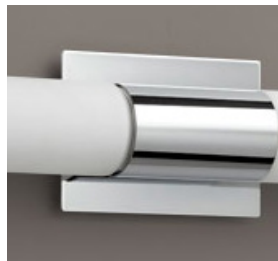
LOCATION _____

PROJECT _____

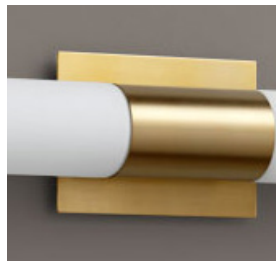
DATE _____



-24 Satin Nickel



-14 Polished Chrome



-40 Aged Brass

Diffusers:

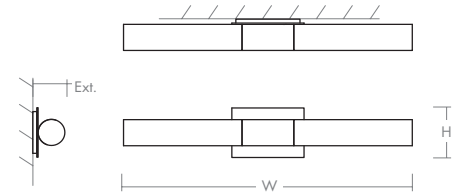


-1 White Opal Glass



- Matte White Acrylic

- LIGHT SOURCE** 2 x 11.9W LED, 3000K, CRI 90
- LUMINAIRE POWER** 29W at 120V
- RATED LIFE** 60000 hr RL
- OPTIONAL COLOR TEMPERATURES** 2700K, 3500K, 4000K
- LUMEN OUTPUT** Delivered: (-1) Glass: 2067 lm (LM-79)
Acrylic: 1872 lm (LM-79)
- INPUT VOLTAGE** 120V or 277V
- DRIVER OUTPUT** 2 x 350 mA, 12W
- DIMMING** 0-10v & Phase (ELV) Dimming - 50/60HZ. 100% to 10% Dimming
- CONSTRUCTION** Plated Steel and Acrylic or glass
- METAL FINISH / DIFFUSER**
 - (-114) White Opal Glass / Polished Chrome
 - (-124) White Opal Glass / Satin Nickel
 - (-140) White Opal Glass / Aged Brass
 - (-14) Matte White Acrylic / Polished Chrome
 - (-24) Matte White Acrylic / Satin Nickel
 - (-40) Matte White Acrylic / Aged Brass



DIMENSIONS

- W:** 27.00"
- H:** 4.75"
- Ext:** 3.00"
- M.C:** 2.38" From top of fixture

- MOUNTING** 4" Octagonal J-Box,
2" x 3" J-Box
(Wall mount only)

- STANDARDS** ETL Dry/Damp listed,
ADA compliant, CEC
Title 24 Compliant,
Conforms to UL STD
1598, Certified CAN/CSA,
STD C22.2 No 250.0.

Order example for standard fixture:

3-590-24 (x- Voltage - xxx-Sequence # - xx-Finish)

3: 120v, 37: 277v

Order example for optional color temperatures: **3-590-2724**

27: 2700K, 35: 3500K, 40: 4000K

