

# NLTH-41TW

## 4" Theia LED Downlight with Selectable CCT

Source: 10W

Up to 950lm

Type

Project

Catalog No.

Notes

### PRODUCT DESCRIPTION

Theia LED luminaires are commercial grade downlights designed for easy installation into new construction or remodel applications. Tunable white luminaires include an integral color temperature switch located on the junction box of each luminaire with a quick connect that allows for easy disconnect and mounting in the ceiling.

### FEATURES

- Five color temperatures in each fixture (2700K / 3000K / 3500K / 4000K / 5000K)
- No housing required and includes junction box with class 2 driver
- Quick installation and cost savings
- IC Air-Tight rated
- cETLus Listed for Wet Locations
- 5-year limited warranty

### SPECIFICATION

**Construction:** Aluminum luminaire with spring clips for easy installation. Gasket included for air-tight and wet location listing without additional caulking.

**Air Flow Restriction:** Luminaire has factory installed gasket to restrict airflow from room into ceiling plenum to <2CFM (cubic feet per minute) in accordance with ASTM-283 Air-Tight requirements.

**Junction Box:** Pre-wired junction box includes quick connect to LED fixtures for ease of installation. Junction box includes four 1/2" knockouts, two keyhole slots and snap on cover. Maximum of 6 No. 12 AWG or Maximum of 8 No. 14 AWG through branch circuit conductor suitable for 90°C permitted in box. [Fixture wire length: 7-1/2" and Junction box wire length: 10-1/2"]

**Mounting:** No housing is required, two tensions steel spring clips secure luminaires to the ceiling. Luminaires accept ceiling thicknesses from 3/8" to 5/8". New construction frame-in or plate are available (ordered separately), not required.

**Minimum clearance:** "IC" Insulated ceiling luminaires are direct contact rated; no minimum clearance is required.

### ELECTRICAL

**Voltage:** 120VAC (blank) or 120-277VAC (LE4), must specify

**Lumens / Wattage:** Up to 950lm / 10W

**Color Temperature:** Selectable CCT: 2700K / 3000K / 3500K / 4000K / 5000K (Note: Preset to 3000K)

**Color Rendering Index:** 90+ CRI

**Beam Spread:** 94° Wide Flood

**Operating Temperature:** 0°C to 35°C ambient temperature

**Lifetime:** 50,000 hours @ L70

**Dimming:** Triac/ELV (blank) or 0-10V (LE4), must specify

[Click Here](#) or check complete dimmer list at [www.NoraLighting.com](http://www.NoraLighting.com) in the "Compatibility" page under "Resources" tab

### OPTIONAL ACCESSORIES

[NF-R246](#): Universal New Construction Frame-In

[NFP-R413](#): New Construction Plate

**Emergency:** Luminaire is compatible with [NEPK-20LEDUNV](#) (ordered separately). Battery operates luminaire at 20W for 90 minute emergency operation with a fully charged battery.

### LABELS AND LISTINGS

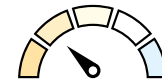
- cETLus Listed for Wet location
- ENERGY STAR certified
- Certified to the high efficacy requirements of California Title 24 JA8-2022
- [5-Year Limited Warranty](#)
- FCC Compliant



### Performance Data

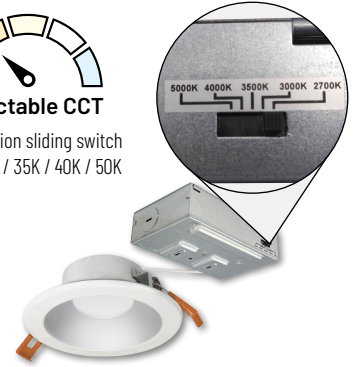
Part Number	Lumens	CCT
NLTH-41TW-MPW	886lm	2700K
NLTH-41TW-MPW	935lm	3000K
NLTH-41TW-MPW	972lm	3500K
NLTH-41TW-MPW	985lm	4000K
NLTH-41TW-MPW	967lm	5000K

### PRODUCT IMAGES AND DIMENSIONS



#### Selectable CCT

Five position sliding switch  
27K / 30K / 35K / 40K / 50K



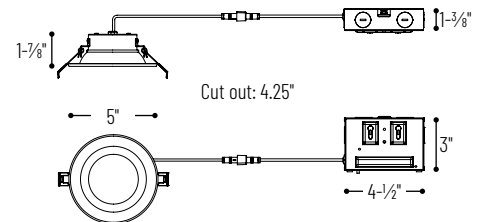
#### NLTH-41TW-HZMPW

Haze Reflector / Matte Powder White Flange



#### NLTH-41TW-MPW

Matte Powder White Reflector / Matte Powder White Flange



## 4" Theia LED Downlight with Selectable CCT

Finish	Input Voltage / Dimming
NLTH-41TW-HZMPW = Haze Reflector / Matte Powder White Flange	(blank) = 120VAC; Triac/ELV dimming
NLTH-41TW-MPW = Matte Powder White Reflector / Matte Powder White Flange	LE4 = 120-277VAC; 0-10V dimming

## Optional Accessories

Description
NF-R246 = Universal New Construction Frame-In
NFP-R413 = New Construction Plate
NEPK-20LEDUNV = 20W Emergency Battery w/Remote Test Switch

Example: NLTH-41TW-MPW = 4" Theia LED Downlight with Selectable CCT, Matte Powder White Finish, 120VAC input; Triac or ELV dimming

# NLTH-41TW

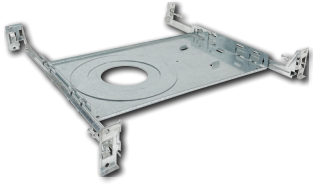
## 4" Theia LED Downlight with Selectable CCT Accessories

Type \_\_\_\_\_

Project \_\_\_\_\_

Catalog No. \_\_\_\_\_

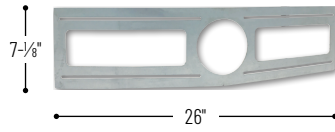
Notes \_\_\_\_\_



Universal New Construction Frame-In

### NF-R246

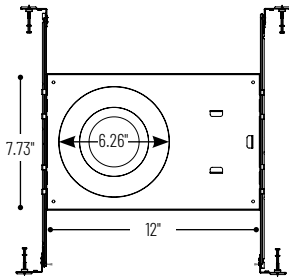
Universal new construction frame-in can be used to assist installing can-less recessed downlighting.



New Construction Plate

### NFP-R413

New construction plate can be used to assist installing canless recessed downlighting.



# PHOTOMETRICS

## 4" Theia LED Tunable Downlight

Type

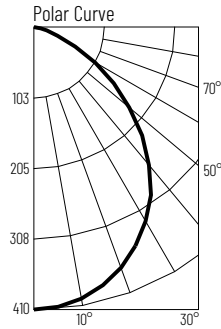
Project

Catalog No.

Notes

### Test Information

Test Number: NTR1749R2  
 Part Number: NLTH-4ITW-MPW  
 Beam Spread: 94° Wide Flood  
 Lumens: 886lm  
 Wattage: 9.47W  
 Efficacy: 94lpw  
 CCT / CRI: 2700K / 90 CRI  
 Spacing Criteria (0°-180°): 1.2  
 Spacing Criteria (90°-270°): 1.2



### Illuminance at a Distance

Distance from Luminaire	FC at Nadir	Beam Diameter
4'	25.7fc	8'-7"
6'	11.4fc	12'-11"
8'	6.4fc	17'-2"
10'	4.1fc	21'-7"
12'	2.9fc	25'-11"

### Zonal Lumen Summary

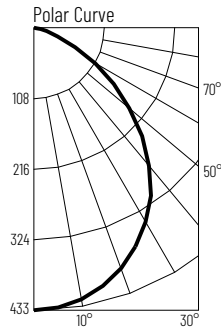
Zone	Lumens	% Luminaire
0-30	309	34.9
0-40	494	55.8
0-60	792	89.5
0-90	886	100
90-180	0	0
0-180	886	100

### Candela Table

Vertical Angles	Candela
0	410
5	408
15	388
25	351
35	298
45	223

### Test Information

Test Number: NTR1750R2  
 Part Number: NLTH-4ITW-MPW  
 Beam Spread: 94° Wide Flood  
 Lumens: 935lm  
 Wattage: 9.35W  
 Efficacy: 100lpw  
 CCT / CRI: 3000K / 90 CRI  
 Spacing Criteria (0°-180°): 1.2  
 Spacing Criteria (90°-270°): 1.2



### Illuminance at a Distance

Distance from Luminaire	FC at Nadir	Beam Diameter
4'	27fc	8'-7"
6'	12fc	13'
8'	6.8fc	17'-4"
10'	4.3fc	21'-7"
12'	3fc	25'-11"

### Zonal Lumen Summary

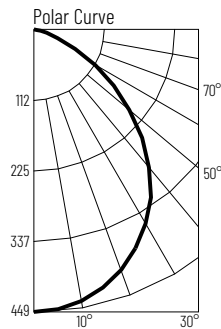
Zone	Lumens	% Luminaire
0-30	326	34.9
0-40	521	55.7
0-60	836	89.4
0-90	935	100
90-180	0	0
0-180	935	100

### Candela Table

Vertical Angles	Candela
0	432
5	430
15	409
25	370
35	314
45	235

### Test Information

Test Number: NTR1751R2  
 Part Number: NLTH-4ITW-MPW  
 Beam Spread: 94° Wide Flood  
 Lumens: 972lm  
 Wattage: 9.19W  
 Efficacy: 106lpw  
 CCT / CRI: 3500K / 90 CRI  
 Spacing Criteria (0°-180°): 1.2  
 Spacing Criteria (90°-270°): 1.2



### Illuminance at a Distance

Distance from Luminaire	FC at Nadir	Beam Diameter
4'	28.1fc	8'-7"
6'	12.5fc	13'
8'	7fc	17'-4"
10'	4.5fc	21'-7"
12'	3.1fc	25'-11"

### Zonal Lumen Summary

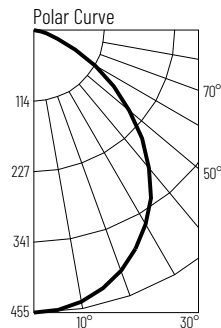
Zone	Lumens	% Luminaire
0-30	339	34.8
0-40	541	55.7
0-60	868	89.4
0-90	972	100
90-180	0	0
0-180	972	100

### Candela Table

Vertical Angles	Candela
0	449
5	447
15	425
25	385
35	326
45	244

### Test Information

Test Number: NTR1752R2  
 Part Number: NLTH-4ITW-MPW  
 Beam Spread: 94° Wide Flood  
 Lumens: 985lm  
 Wattage: 9.27W  
 Efficacy: 106lpw  
 CCT / CRI: 4000K / 90 CRI  
 Spacing Criteria (0°-180°): 1.2  
 Spacing Criteria (90°-270°): 1.2



### Illuminance at a Distance

Distance from Luminaire	FC at Nadir	Beam Diameter
4'	28.4fc	8'-7"
6'	12.6fc	13'
8'	7.1fc	17'-4"
10'	4.6fc	21'-7"
12'	3.2fc	25'-11"

### Zonal Lumen Summary

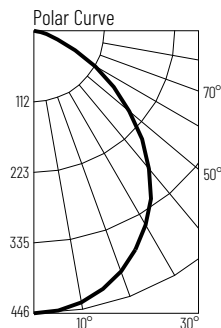
Zone	Lumens	% Luminaire
0-30	343	34.8
0-40	548	55.6
0-60	879	89.3
0-90	985	100
90-180	0	0
0-180	985	100

### Candela Table

Vertical Angles	Candela
0	455
5	452
15	430
25	389
35	329
45	247

### Test Information

Test Number: NTR1753R2  
 Part Number: NLTH-4ITW-MPW  
 Beam Spread: 94° Wide Flood  
 Lumens: 967lm  
 Wattage: 9.49W  
 Efficacy: 102lpw  
 CCT / CRI: 5000K / 90 CRI  
 Spacing Criteria (0°-180°): 1.2  
 Spacing Criteria (90°-270°): 1.2



### Illuminance at a Distance

Distance from Luminaire	FC at Nadir	Beam Diameter
4'	27.9fc	8'-7"
6'	12.4fc	13'
8'	7fc	17'-4"
10'	4.5fc	21'-7"
12'	3.1fc	26'

### Zonal Lumen Summary

Zone	Lumens	% Luminaire
0-30	336	34.8
0-40	537	55.6
0-60	863	89.3
0-90	967	100
90-180	0	0
0-180	967	100

### Candela Table

Vertical Angles	Candela
0	446
5	444
15	422
25	382
35	324
45	243