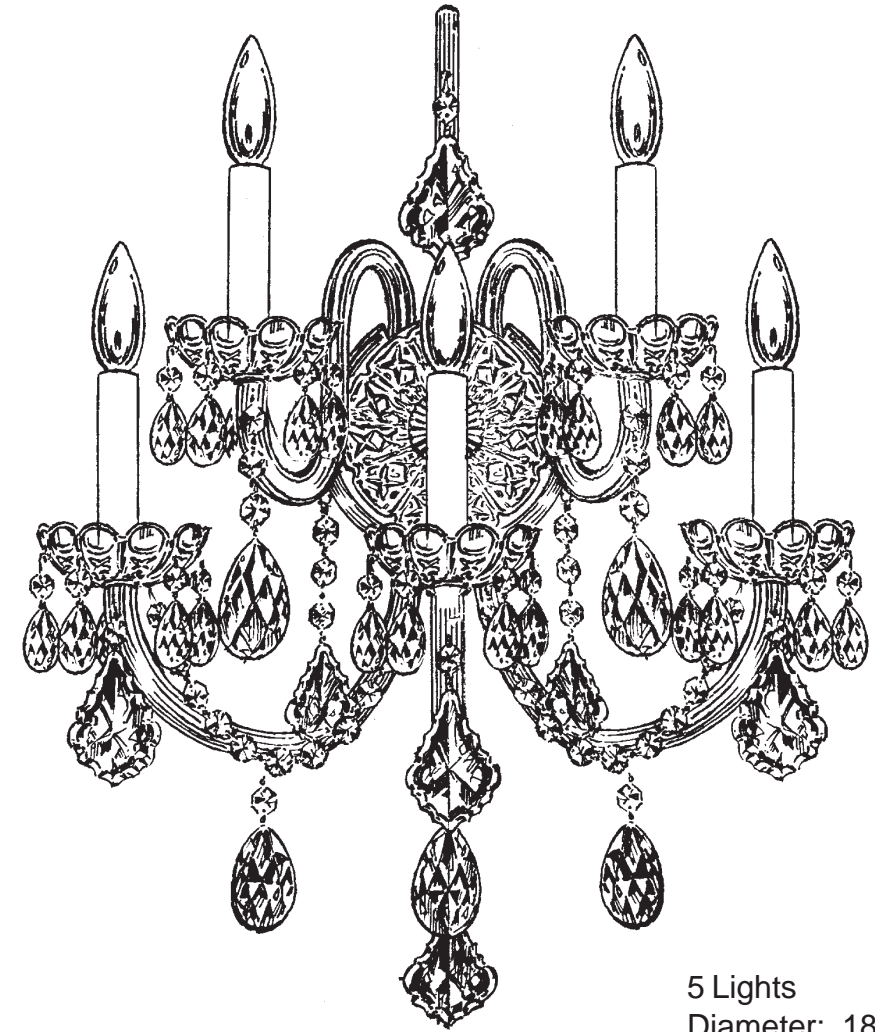




SCHONBEK®

OLDE WORLD 6806- __ __A



5 Lights
Diameter: 18"
Body Length: 23"
Extension: 9-1/2"
Hanging Weight: 9 lbs.

THIS DESIGN IS THE PROPRIETARY
TRADE DRESS/TRADemark OF
SWAROVSKI LIGHTING, LTD.

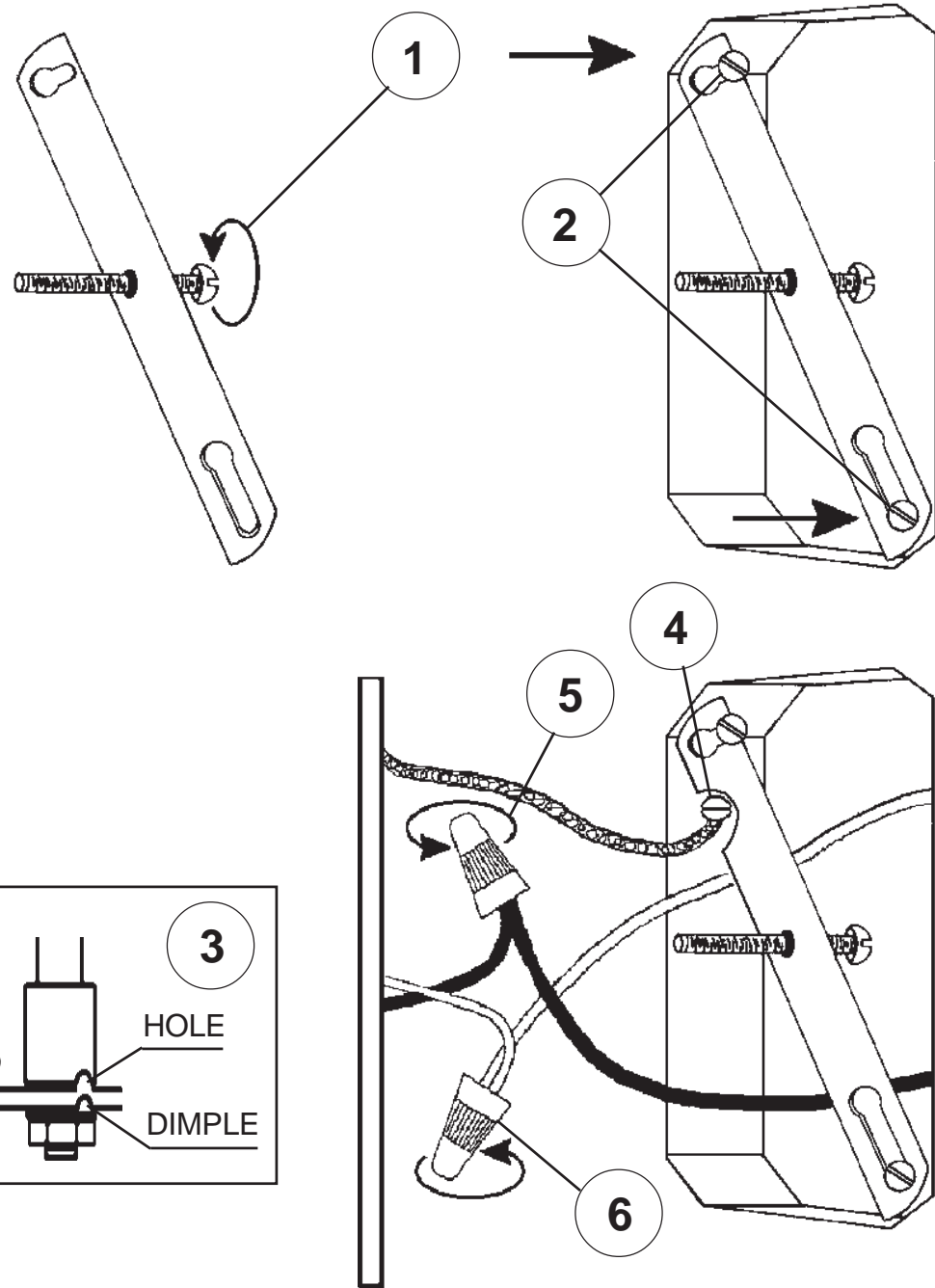


SCHONBEK®

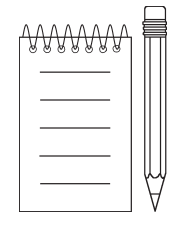
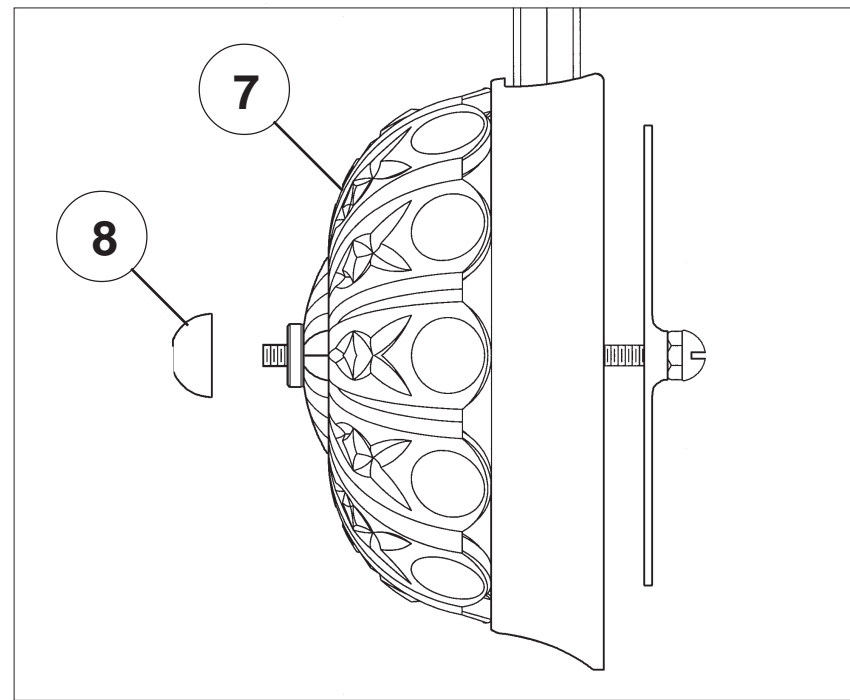
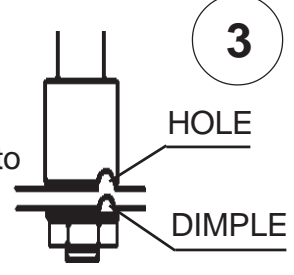
MAX <u>60</u> W		110-120 V						

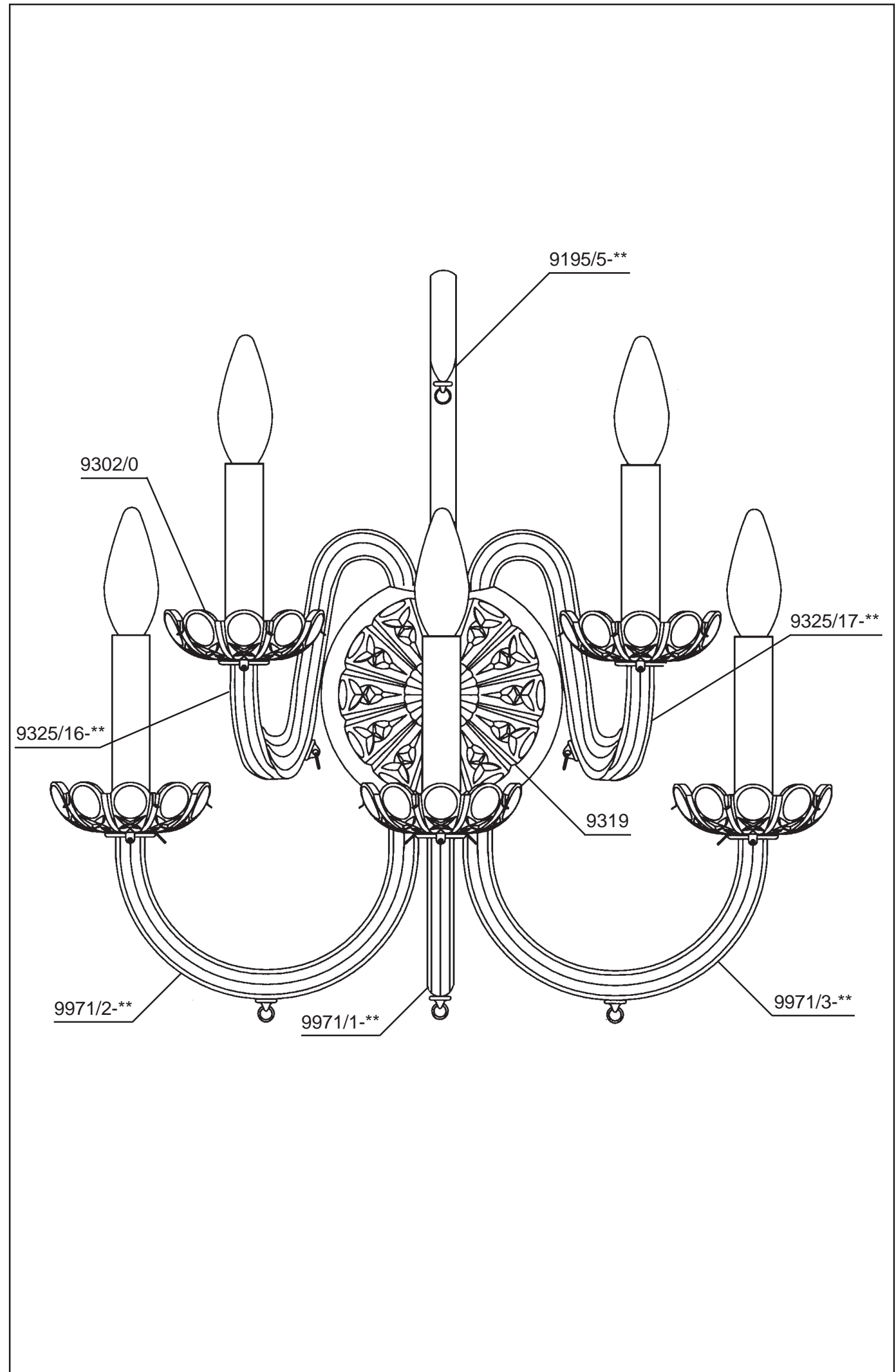
SCHONBEK® is a member of the Swarovski group.

All electrical components must be installed by a licensed electrician in accordance with the National Electric Code and the appropriate local electrical codes.



Turn arms to line up holes in arms with dimple in plate. Tighten lock washer and nut to secure arms in place.





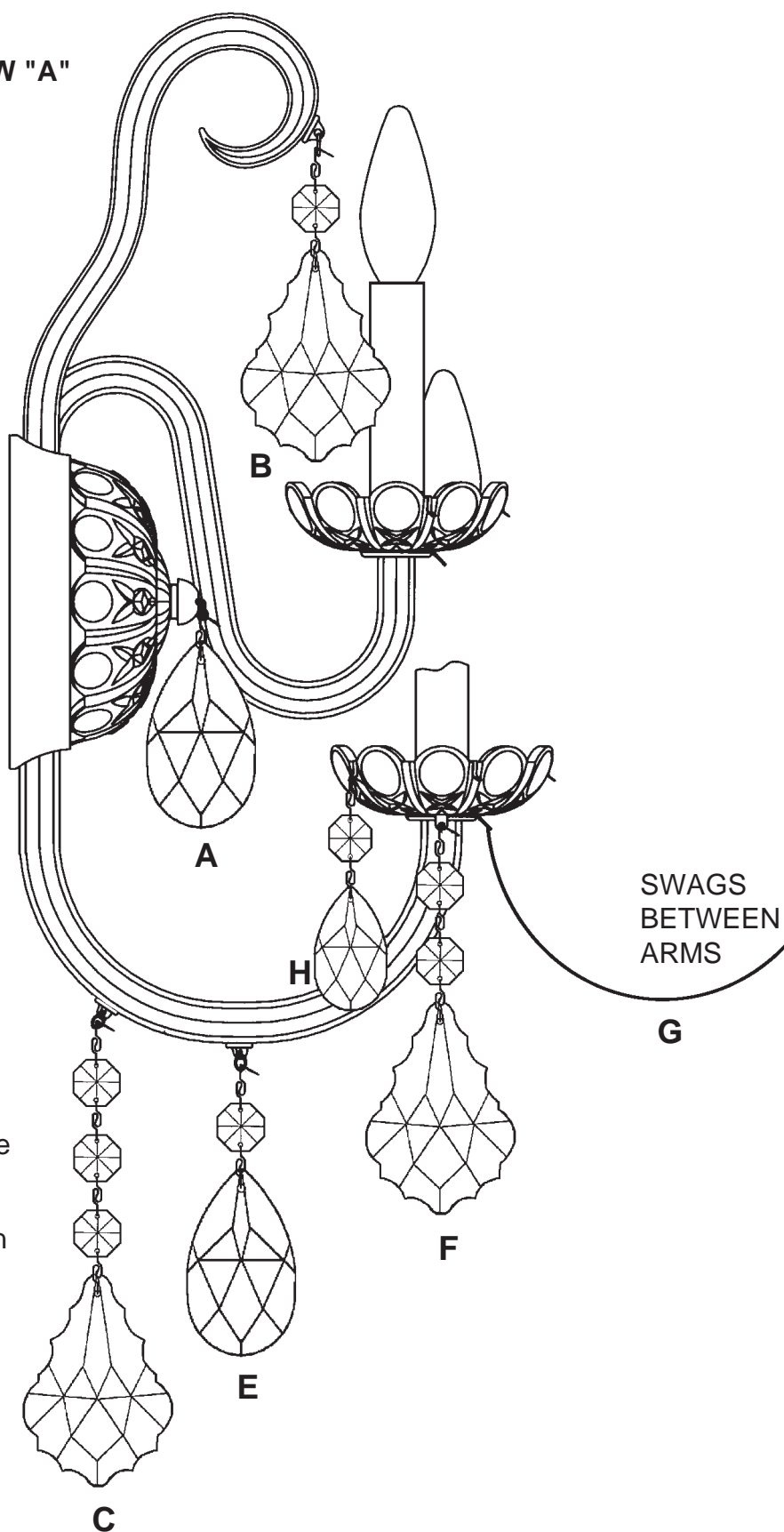


9

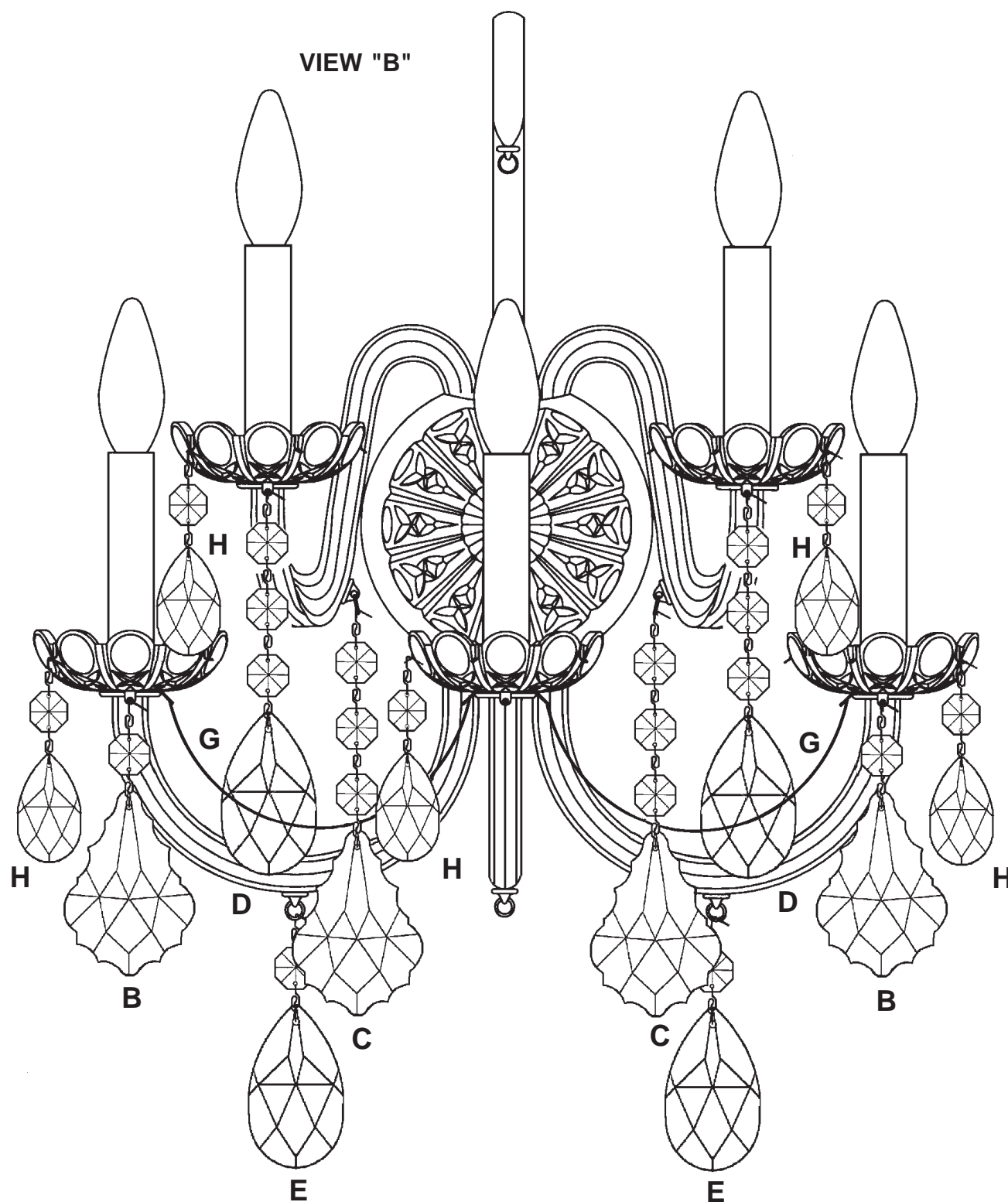
You will need 5 - B10
25 Watts Recommended
60 Watts Max

Install bulbs and be sure
to test fixture BEFORE
trimming.

VIEW "A"



VIEW "B"



10 Hook Drop "A" into the pigtail of the center knob. See View "A".

11 Hook Drop "B" into the ring on the upper center glass scroll. See View "A". Hook Drops "C" and Drop "E" into the rings on the center glass arm. See View "A".

12 Hook Drops "F" into the front tab under the bobèche on the center glass arm. See View "A".

13 Hook Drops "C" into the rings of the upper glass arms. See View "B".

14 Hook Drops "D" into the front tabs under the bobèche on the upper glass arms. See View "B".

15 Hook Drops "E" into the rings of the lower glass arms. See View "B".

16 Hook Drops "B" into the center tabs on the lower glass arms. See View "B".

17 Hook Chains "G" into the side tabs under the lower glass arm bobèches. Hook the other end into the side tabs under the center glass arm bobèche. Chains "G" are swagged between the center glass arm and the outside glass arms. See View "B".

18 Every bobèche is trimmed with Drops "H", suspended from every bracket between the scallops. See View "B".

