

Windgate 3 Light Wall

44941-

1.2

GENERATION LIGHTING WALL

SAVE THESE INSTRUCTIONS!

GENERAL PRODUCT INFORMATION:

This product is safety listed for damp locations.

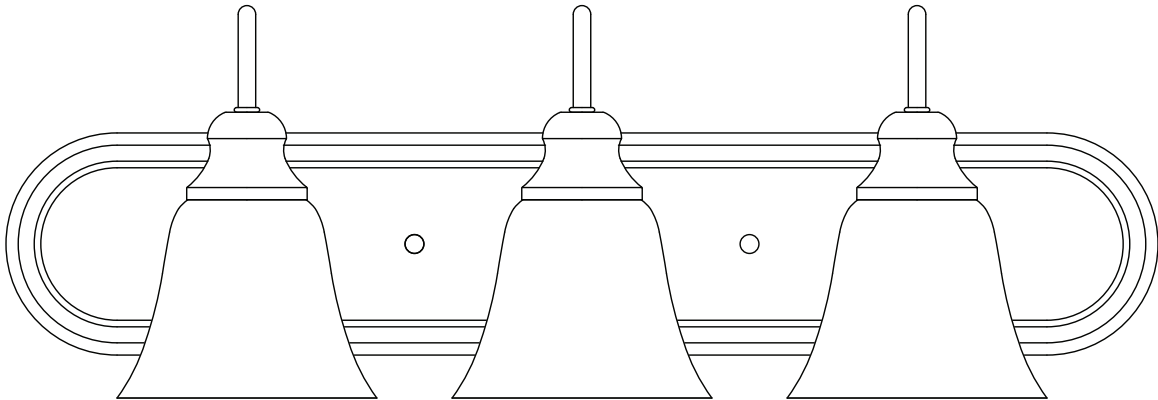
Incandescent version may be dimmed with a standard incandescent dimmer. LED version may be dimmed with a LED dimmer. Consult lamp manufacturer for additional information.

This instruction shows a typical installation.

CAUTION - RISK OF FIRE

This product must be installed in accordance with the applicable installation code by a person familiar with the construction and operation of the product and the hazards involved.

Use minimum 90°c supply conductors.



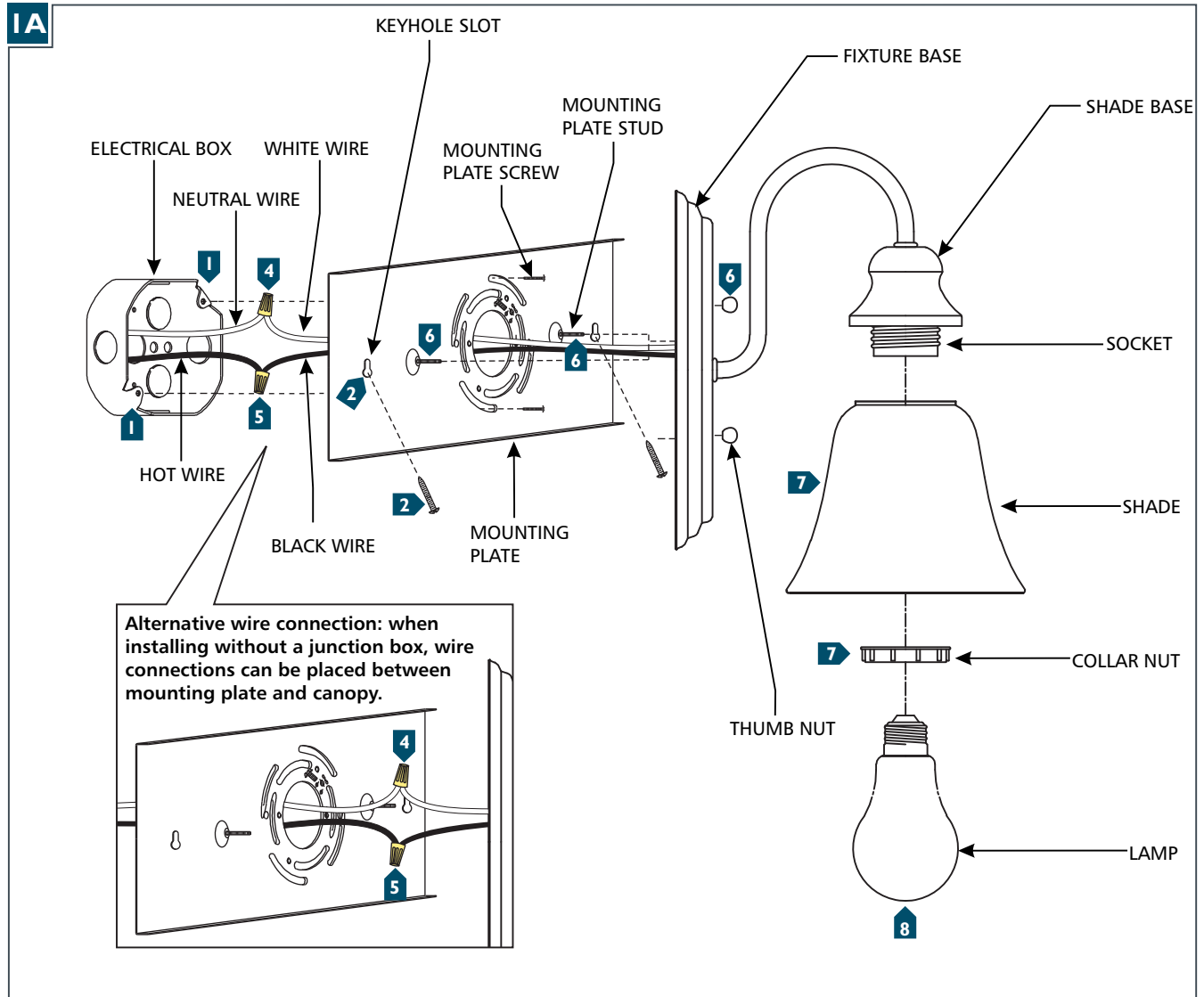
GENERATION LIGHTING

7400 Linder Ave., Skokie, IL 60077

T 847.410.4400 | F 847.410.4500

www.generationlighting.com

Install the Fixture



- 1** Secure the mounting plate to the electrical box with two mounting plate screws.
- 2** Use the keyhole slots in the mounting plate for additional support or as an alternative mounting method.
- 3** Connect the fixture to a suitable ground in accordance to local electrical codes.
- 4** Connect the white fixture wire to the neutral power line wire with a wire nut.
- 5** Connect the black fixture wire to the hot power line wire with a wire nut.
- 6** Align then place the fixture base onto the mounting plate studs and secure it with the two thumb nuts.
- 7** Place the shade onto the shade base and secure it in place by installing and tightly screwing the shade collar nut onto the socket; repeat for all shades.
- 8** Screw the lamp into the socket. Refer to the label on the socket for Max Wattage Information.