

Assembly Instruction Sheet #S-1156P4 For Style 1156P4

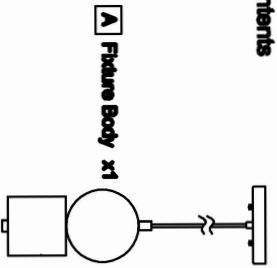
Total Required: Flathead screwdriver, Phillips screwdriver, pliers, wire cutters, wire strippers, electrical tape, safety glasses.
Light Source: (1) 120V LED 9W DIMMABLE (4000K)
Estimated Assembly Time: 15-30 minutes

Preparation: Identify and inspect all parts before beginning installation. Check package content list and diagrams below to be sure all parts are present. If any parts are missing or damaged, do not attempt to assemble, install, or operate the fixture. Contact customer service for replacement parts.

⚠ Warnings and Cautions

Turn off electricity at circuit breaker or main fuse box before installation. Consult a licensed electrician if in doubt. These instructions are provided for your safety. It is very important you read them completely before installing the fixture. We strongly recommend that a licensed, professional electrician perform the installation. Disconnect fixture from power source before replacing bulbs. Make sure bulbs are given sufficient time to cool before removal.

Package Contents

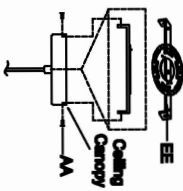


PART	DESCRIPTION	QUANTITY
AA	Decorative Caps	2pcs
BB	Shielded Insulator	2pcs
CC	Outlet Box Cover	2pcs
DD	Mounting Screw	2pcs
EE	Mounting bracket	2pcs
FF	Hex Nuts	2pcs

STEP 1 - Attach Mounting Screws, Lock Washers and Hex Nuts to Mounting Bracket.

A. Line up a set of holes on the Mounting bracket (EE) and holes on the Backplate.
Thread Mounting Screws (DD) into the holes on the Mounting bracket (EE). Pass Lock Washers and Thread Hex Nuts onto the Mounting Screws (DD). Hand tighten until snug.

Figure 1



STEP 2 - Attach Mounting Bracket to Outlet Box

A. Pass the supply wires through the Mounting bracket (EE). Attach the Mounting bracket (EE) to the Outlet Box with the head of the Green Ground Screw facing you. Secure it with Outlet Box Screws.
Tighten until snug.

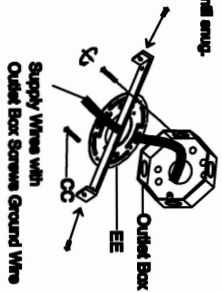
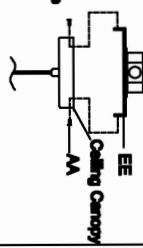


Figure 2

STEP 3 - Fit Backplate to Mounting Bracket Assembly

A. Fit the backplate to Mounting Screws (DD) and secure with Decorative Caps (AA). Note: The backplate should be snug against the casing and the Decorative Caps (AA). If not, adjust the length of the Mounting Screws (DD) by unscrewing the Hex Nut and Lock Washer and then screwing Mounting Screws (DD) in or out of the Mounting bracket (EE) until the correct length is achieved. Once the Casing Canopy is secure, remove the Decorative Caps (AA) and Casing Canopy and proceed to Step 4

Figure 3



STEP 4 - Wire Connections

A. Use standard wire connections to make all wire connections. Twist connections until wires are tightly joined together. Wrap each connection with approved electrical tape and carefully seal all the connected wires into the Outlet Box.

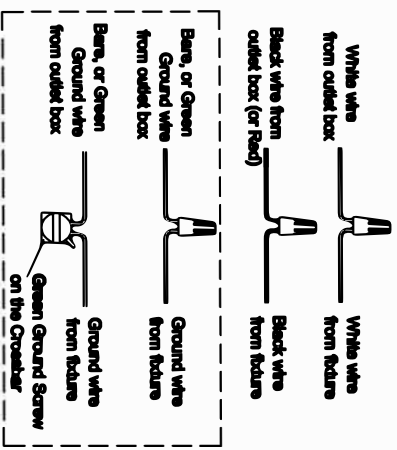


Figure 4

STEP 5 - Install Casing Canopy to Casing

A. Carefully tuck all wires into the outlet box and position the Casing Canopy of the Fixture Body (A) over the outlet box. Align the holes in the Casing Canopy with the Mounting Screws (DD). Secure with Decorative Caps (AA) and hand tighten until snug.

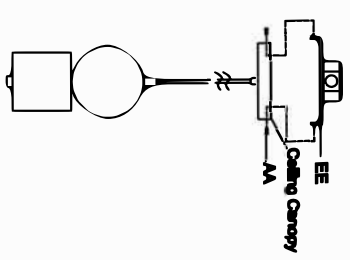


Figure 5