

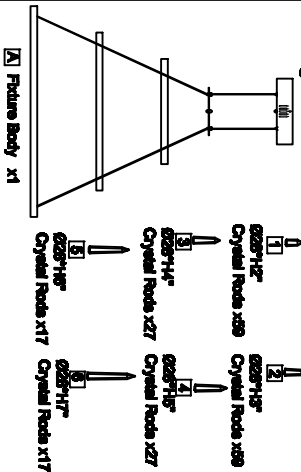
Assembly Instruction Sheet #S-1043P42-3 For Style 1043P42-3

Tools Required: Flathead screwdriver, Phillips screwdriver, pliers, wire cutters, wire strippers, electrical tape, safety glasses.
 Light Source: (8) 120V LED 170W DIMMABLE (3000K)
 Estimated Assembly Time: 10-20 minutes
 Preparation: Identify and inspect all parts before beginning installation. Check package content list and diagrams below to be sure all parts are present. If any parts are missing or damaged, do not attempt to assemble, install, or operate the fixture. Contact customer service for replacement parts.

Warnings and Cautions

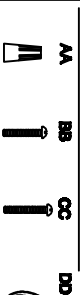
Turn off electricity at circuit breaker or main fuse box before installation. Consult a licensed electrician if in doubt. These instructions are provided for your safety. It is very important you read them completely before installing the fixture. We strongly recommend that a licensed, professional electrician perform the installation. Disconnect fixture from power source before replacing bulbs. Make sure bulbs are given sufficient time to cool before removal.

Package Contents



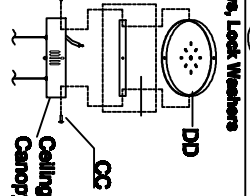
Hardware Contents

PART	DESCRIPTION	QUANTITY
AA	Mounting Bails	2pcs
BB	Wire nut	3pcs
CC	Outlet Box Screw	2pcs
DD	Mounting Screw	2pcs
EE	Crossbar	1pc



STEP 1 - Attach Mounting Screws, Lock Washers and Hex Nuts to Crossbar.
 A. Line up a set of holes on the Crossbar (DD) and Holes on the ceiling canopy, Thread Mounting Screws (CC) into the holes on the Crossbar (DD), Pass Lock Washers and Thread Hex Nuts onto the Mounting Screws (CC).
 Hand tighten until snug.

Figure 1



STEP 2 - Attach Crossbar to Outlet Box.
 A. Pass the supply wires through the Crossbar (DD). Attach the Crossbar (DD) to the Outlet Box (BB) with the head of the Green Ground Screw feeding you. Secure it with Outlet Box Screws (not included). Tighten until snug.

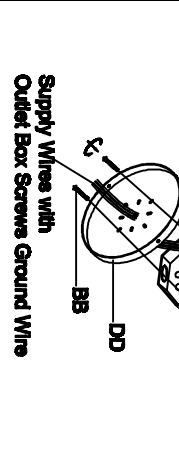


Figure 2

STEP 3 - Wire Connections
 A. Use standard wire connectors (not included) to make all wire connections. Twist connectors until wires are tightly joined together. Wrap each connection with approved electrical tape and carefully stuff all the connected wires into the Outlet Box.

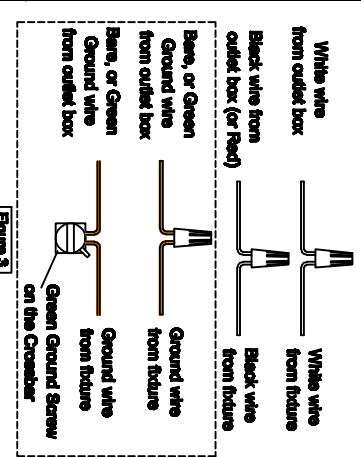


Figure 3

STEP 4 - Attach Ceiling Canopy to Mounting bracket.
 A. Place Ceiling Canopy over the Mounting bracket(DD). Line up the hole on the Ceiling Canopy and the mounting hole on the Mounting bracket, secure by threading Mounting Screw (CC) into the Mounting bracket (DD), tighten until snug.

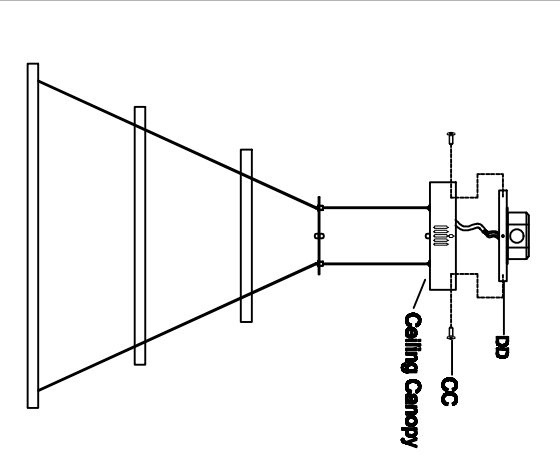


Figure 4

STEP 5 - Install Oval Crystal.
 A. Put 84 crystals (H2-X20PCS, H3-X20PCS, and H4-X11PCS, H5-X11PCS, H6-X6PCS, H7-X6PCS) in the first layer with random sizes of crystals like Figure 6 in random order
 B. Put 68 crystals (H2-X20PCS, H3-X20PCS, and H4-X6PCS, H5-X6PCS, H6-X6PCS, H7-X6PCS) in the second layer with random sizes of crystals like Figure 6 in random order
 C. Put 44 crystals (H2-X9PCS, H3-X9PCS, and H4-X6PCS, H5-X6PCS, H6-X6PCS, H7-X6PCS) in the third layer with random sizes of crystals like Figure 6 in random order

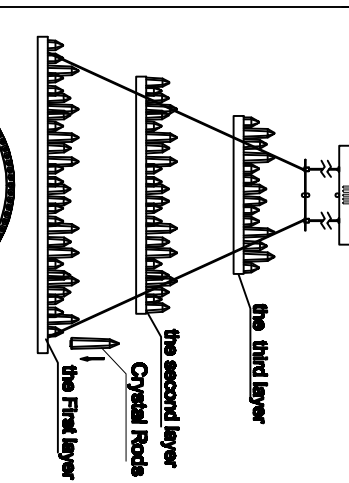


Figure 5

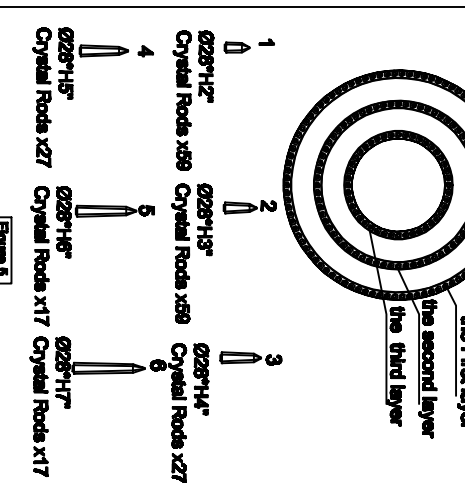


Figure 6